



# Marine life SUSTAINABILITY VOCABULARY

海の環境保護に関する言葉

Praenuan Limvattanakul

Edited by: **R**omerawin **S**untaranond & **C**harisa **H**owe

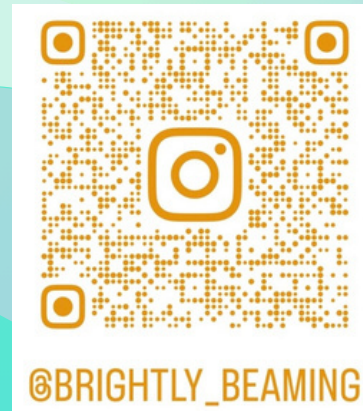
Translated by **T**akahiro **T**anabe (Japanese)





**@brightly\_beaming**

**[www.brighterfuture.live/brightly\\_beaming.html](http://www.brighterfuture.live/brightly_beaming.html)**



Author

Praenuan Limvattanakul

Contributing Editors:

Romerawin Suntaranond

Charisa Howe

Takahiro Tanabe

The flashcards provided in this publication and on this website are intended for children to use with adult supervision.

The authors and publisher disclaim any liability incurred from the use or application of these flashcards.

Copyright ©2026 Praenuan Limvattanakul

All rights reserved. No part of this publication or its flashcards may be reproduced without the prior permission of both the copyright owner and the publisher of these flashcards.

Published by Brightly Beaming

Bangkok Patana School

643 La Salle Road (Sukhumvit 105),

Bangna Tai, Bangna, Bangkok 10260 Thailand

# COLOR CODING:

SUNLIGHT ZONE - EASY

TWILIGHT ZONE - MEDIUM

MIDNIGHT ZONE - DIFFICULT

ABYSS - VERY DIFFICULT

# 色分け:

有光層 -> 簡単

中深層 -> 中度

漸深層 -> 難しい

漸深層 -> 非常に難しい





Sunlight zone  
有光層







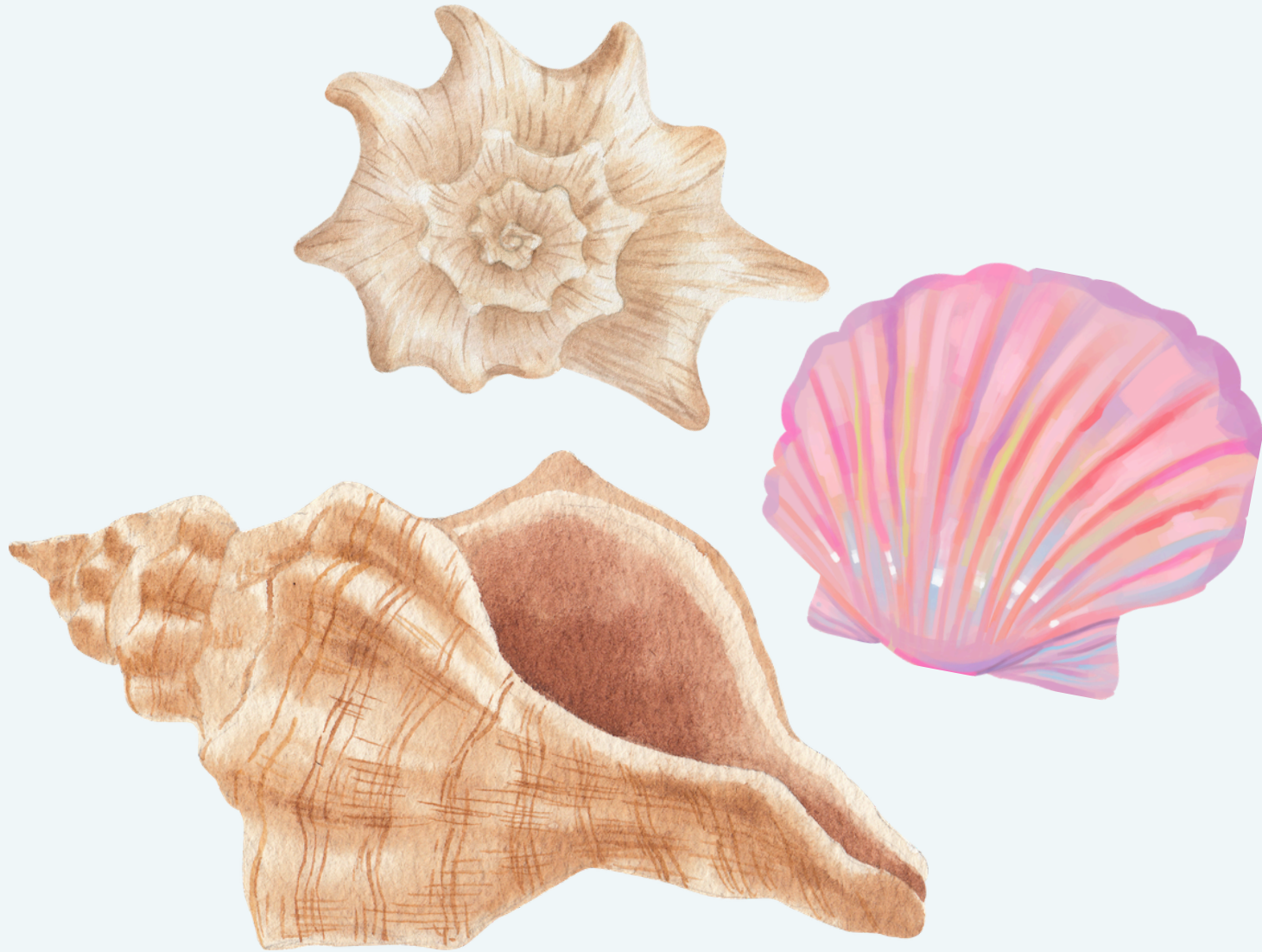
# Rubbish

ゴミ



# Coral サンゴ

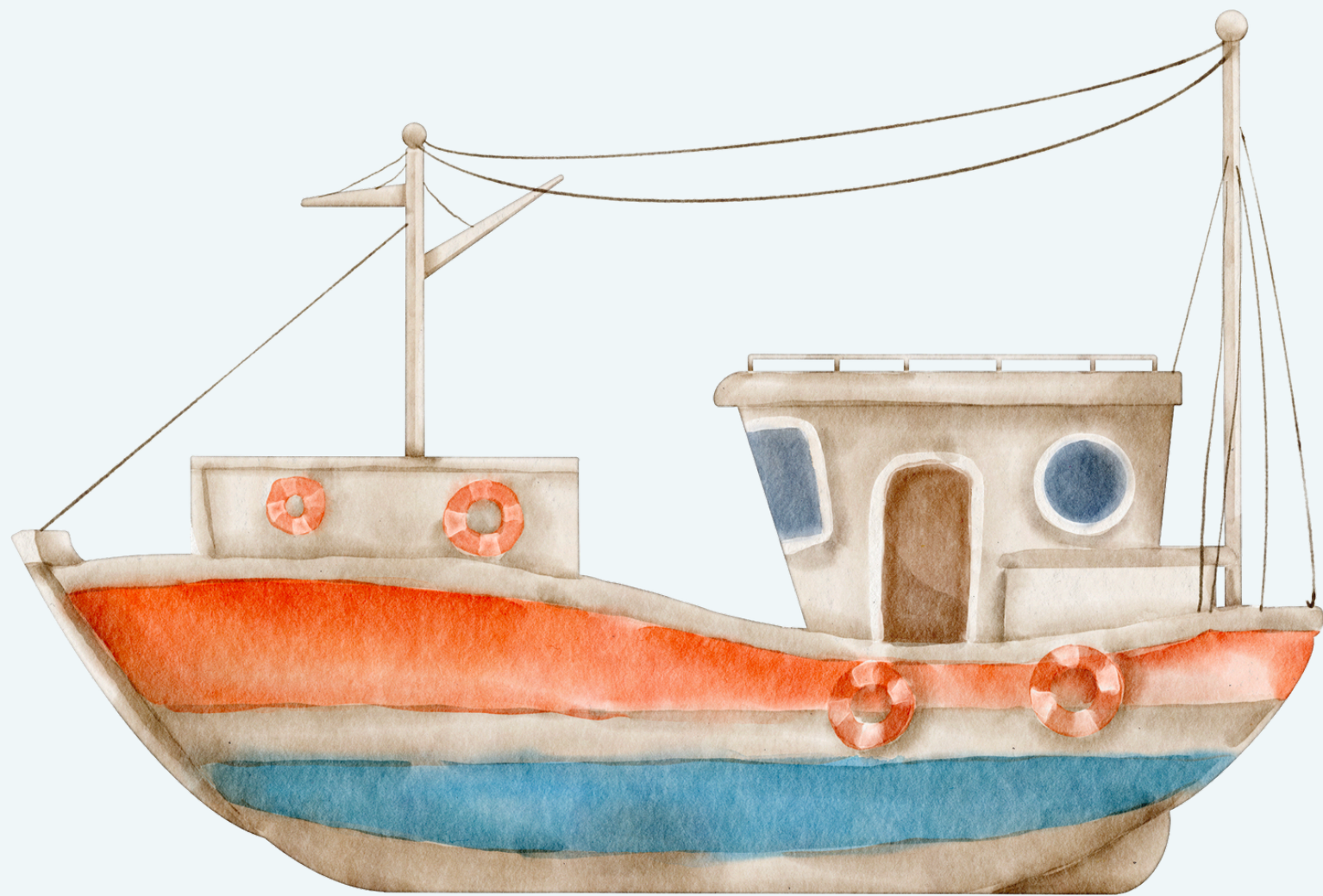






Seashell

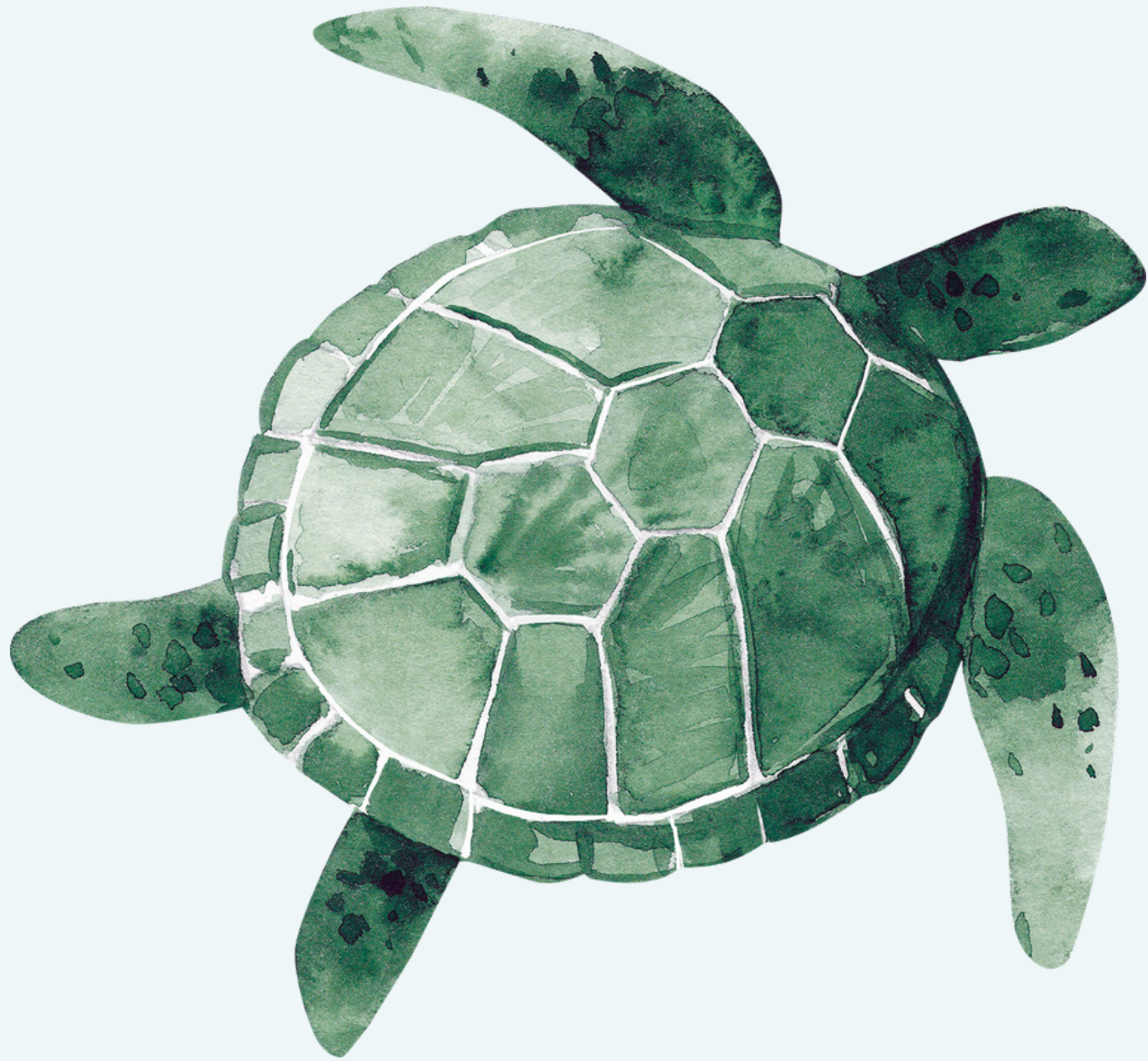
貝殼





**Fishing boat**

**漁船**





# Sea Turtle

## ウミガメ





Blue Whale

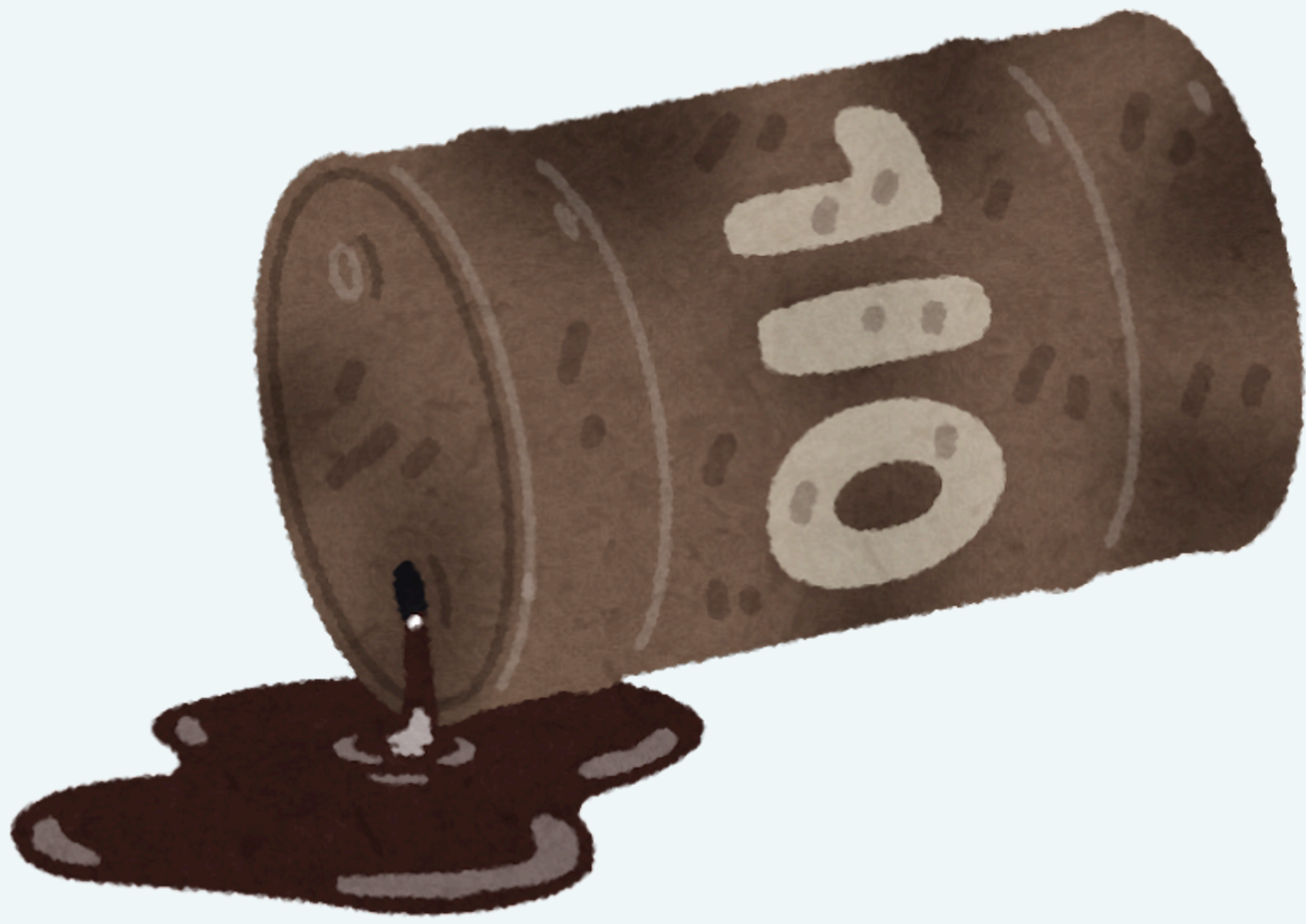
シロナガスクジラ



A decorative border of watercolor coral in various colors (red, green, blue, yellow) frames the bottom and sides of the page. The coral is rendered in a soft, painterly style with visible brushstrokes.

# Recycling

## リサイクル



# Oil Barrel

## 石油バレル





# Jellyfish

## クラゲ





A watercolor illustration of various coral reefs in shades of red, orange, green, blue, and purple, framing the central text. The coral is rendered with soft, blended colors and delicate outlines, creating a vibrant and naturalistic feel.

# Plastic bottle

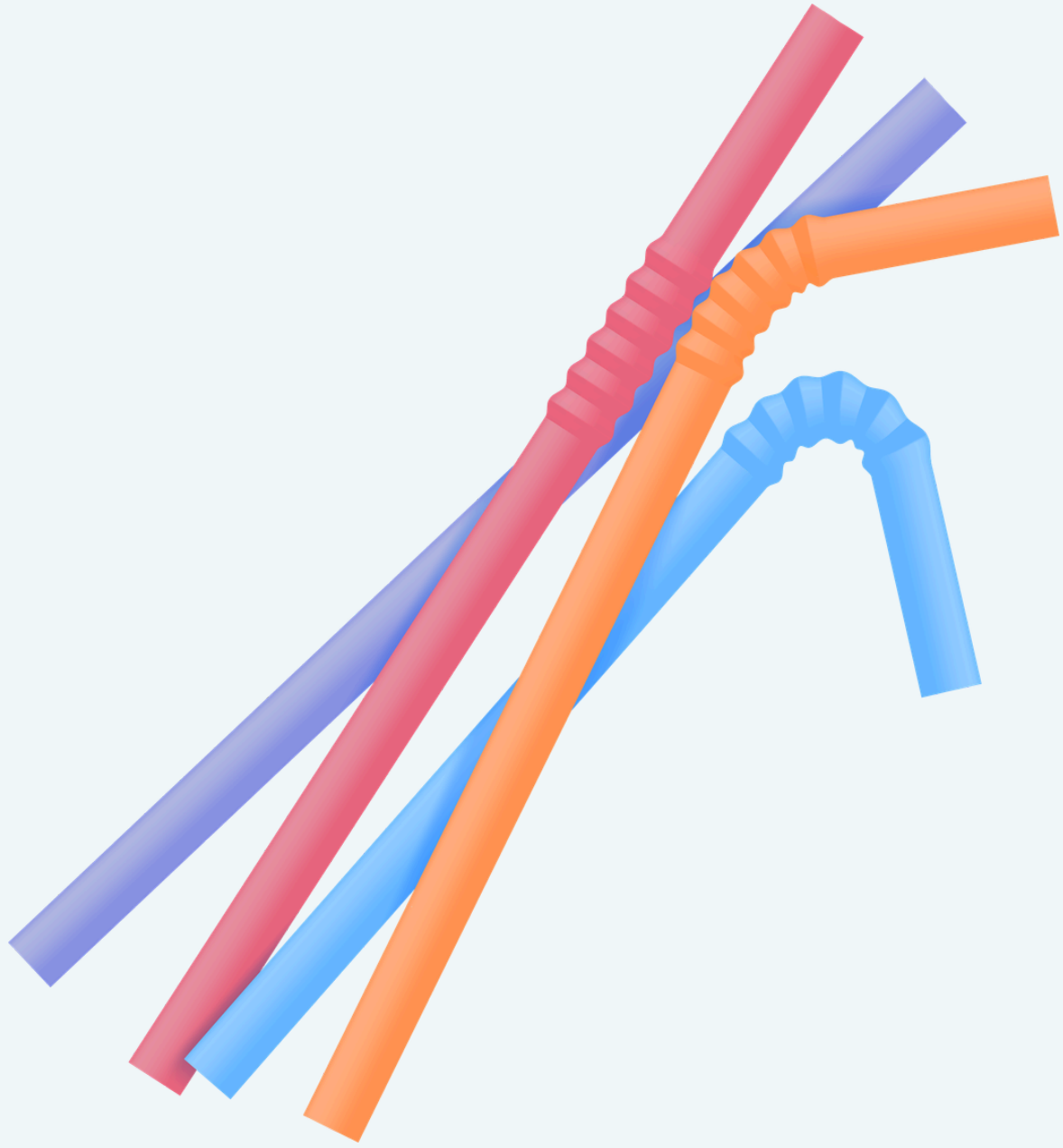
## ペットボトル



A watercolor illustration of coral reefs in various colors (red, green, blue, yellow) framing the central text. The coral is rendered with soft, blended colors and visible brushstrokes, creating a natural, organic feel. The background is a light, pale blue gradient.

Plastic Bag

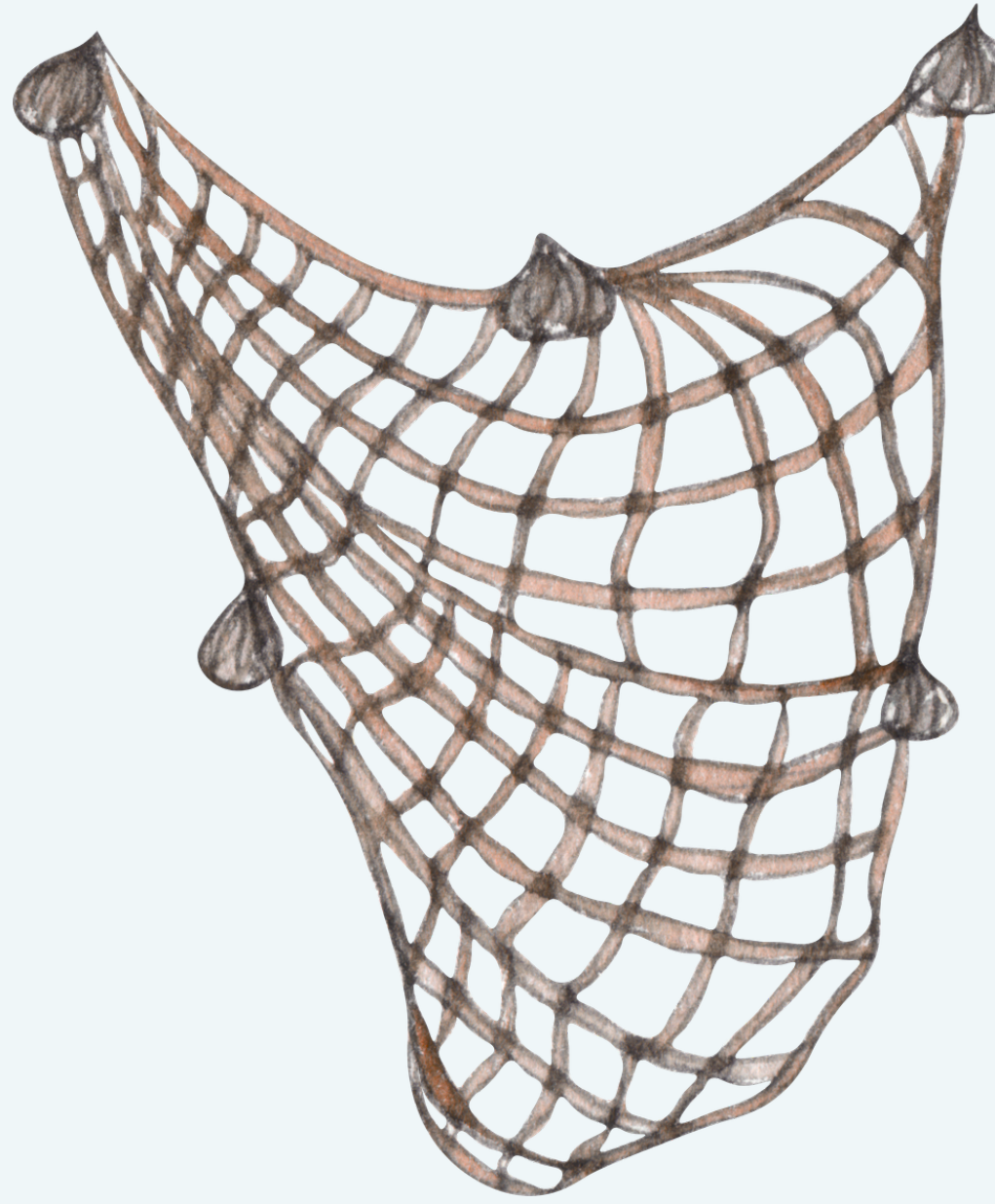
レジ袋





# Plastic Straws

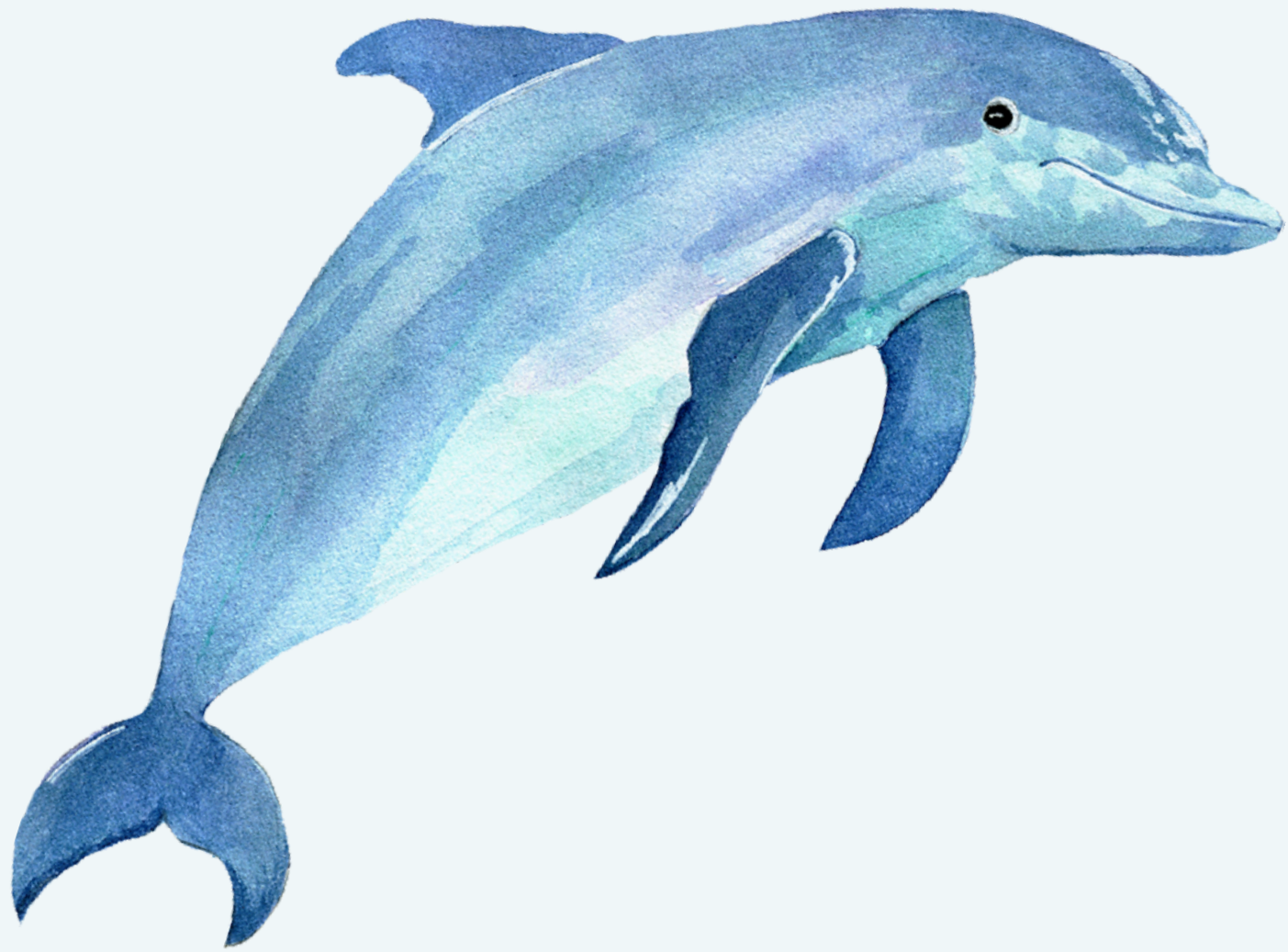
## プラスチックストロー





Fishing Net

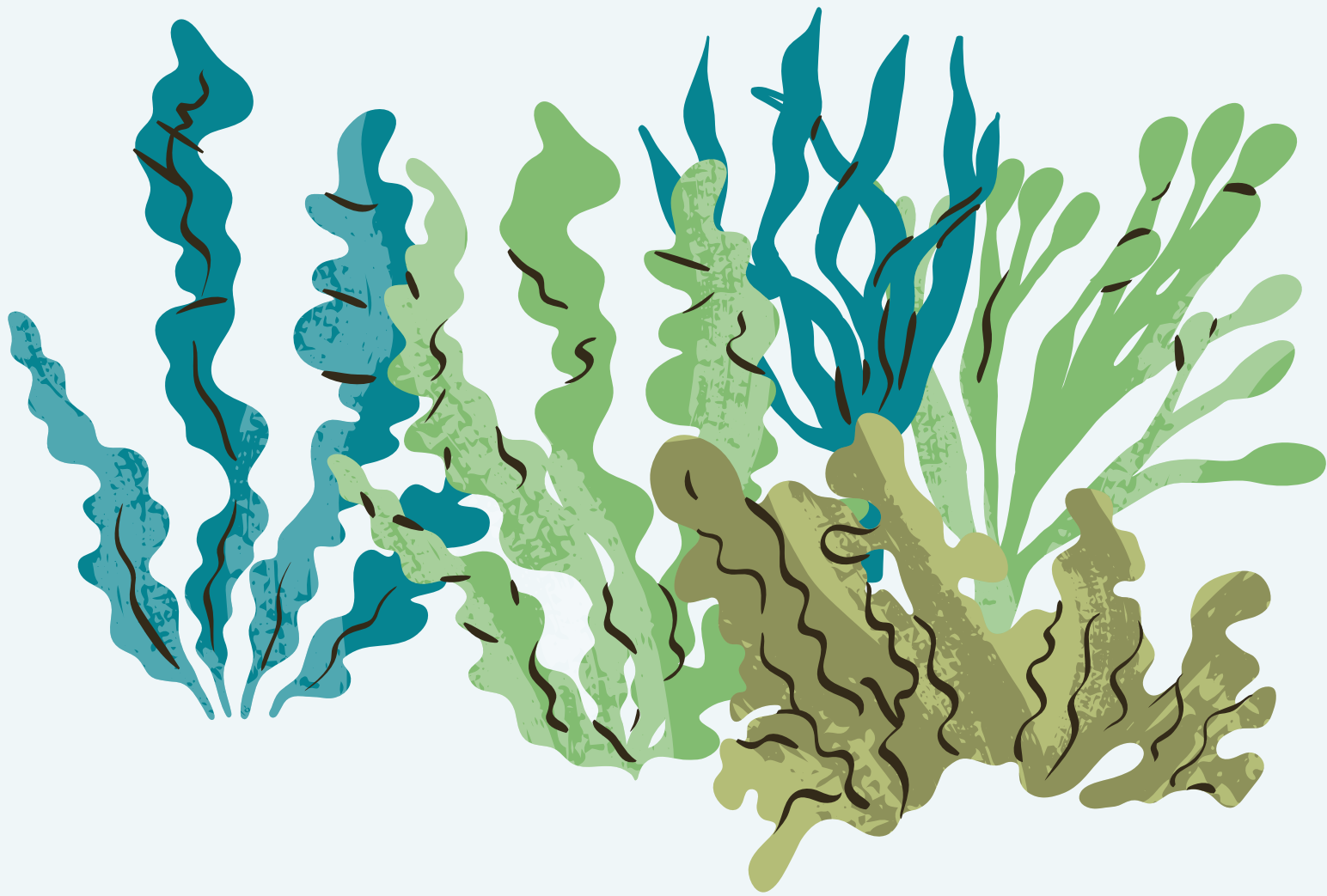
漁網



# Dolphin

## イルカ

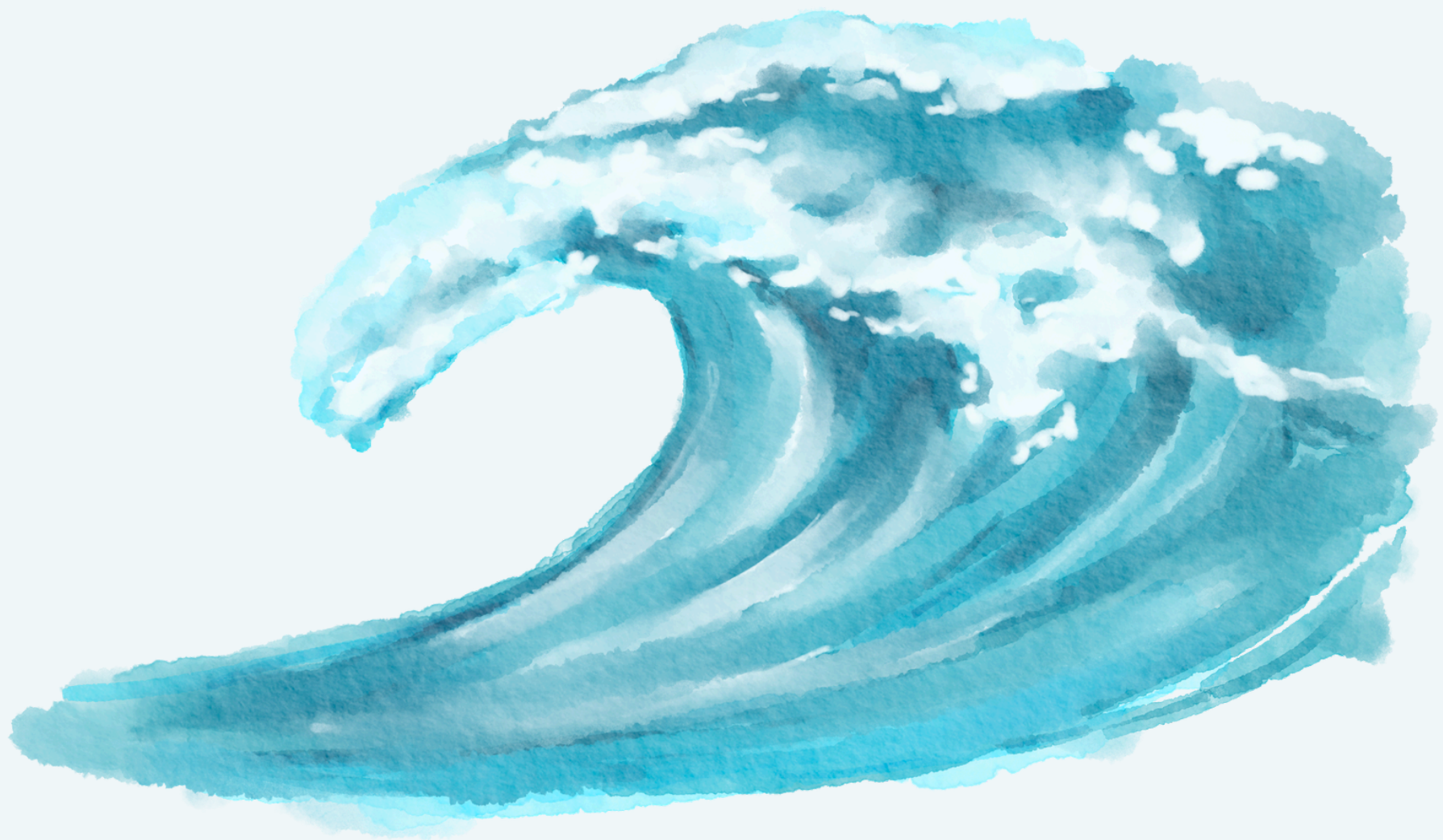




# Seaweed

## 海藻





# Ocean 海

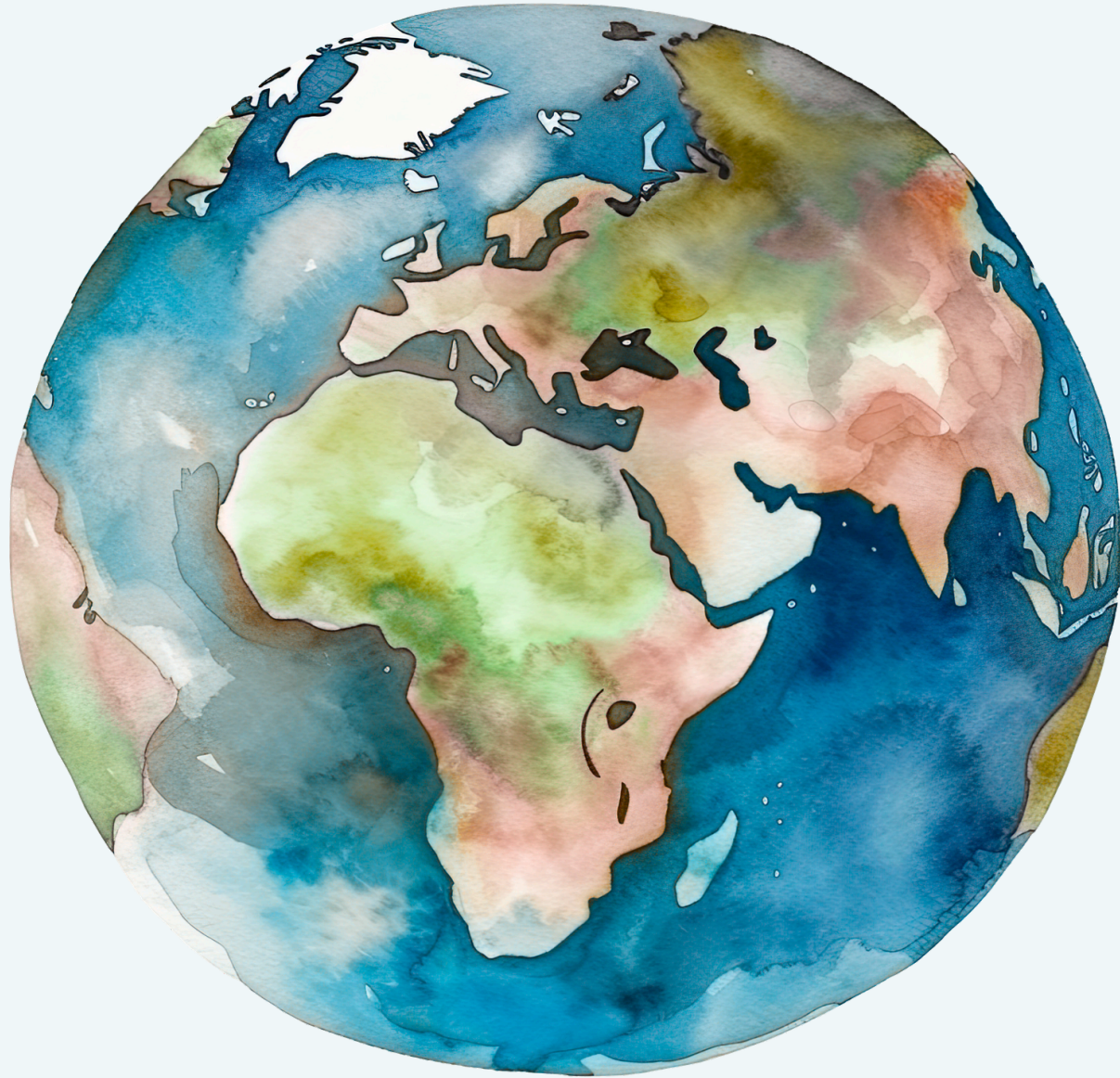




# Fishing

## 漁業





# Earth 地球





Fish

魚





# Octopus

## タコ

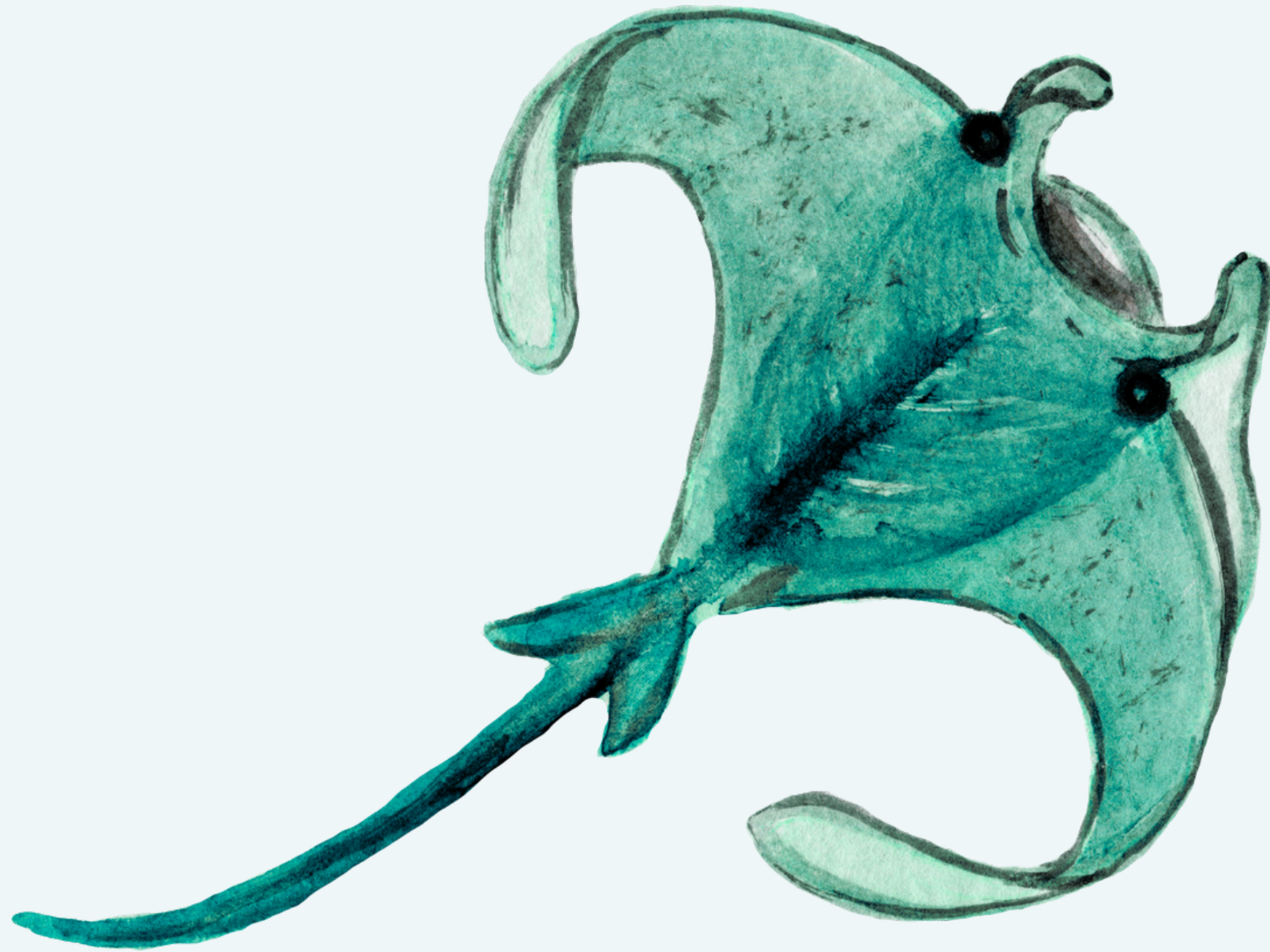






**Drinking water**

飲料水





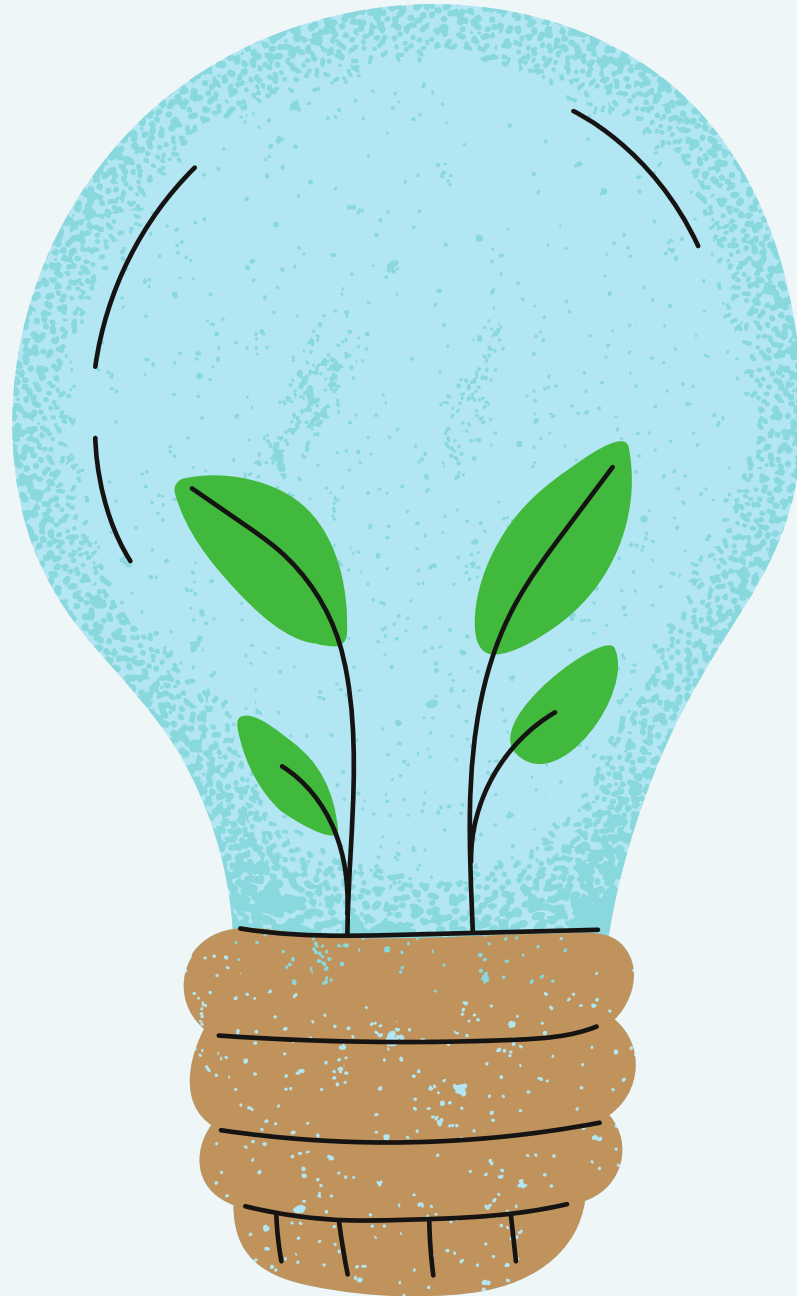
Stingray

エイ

The background is a deep blue gradient. In the upper left, there is a school of dark blue fish silhouettes swimming towards the right. On the right side, a large, dark blue rock formation with icicles hangs down. In the bottom right, a bright red crab is perched on a dark blue rock. The text 'Twilight Zone' and '中深層' is centered in the middle of the image.

# Twilight Zone

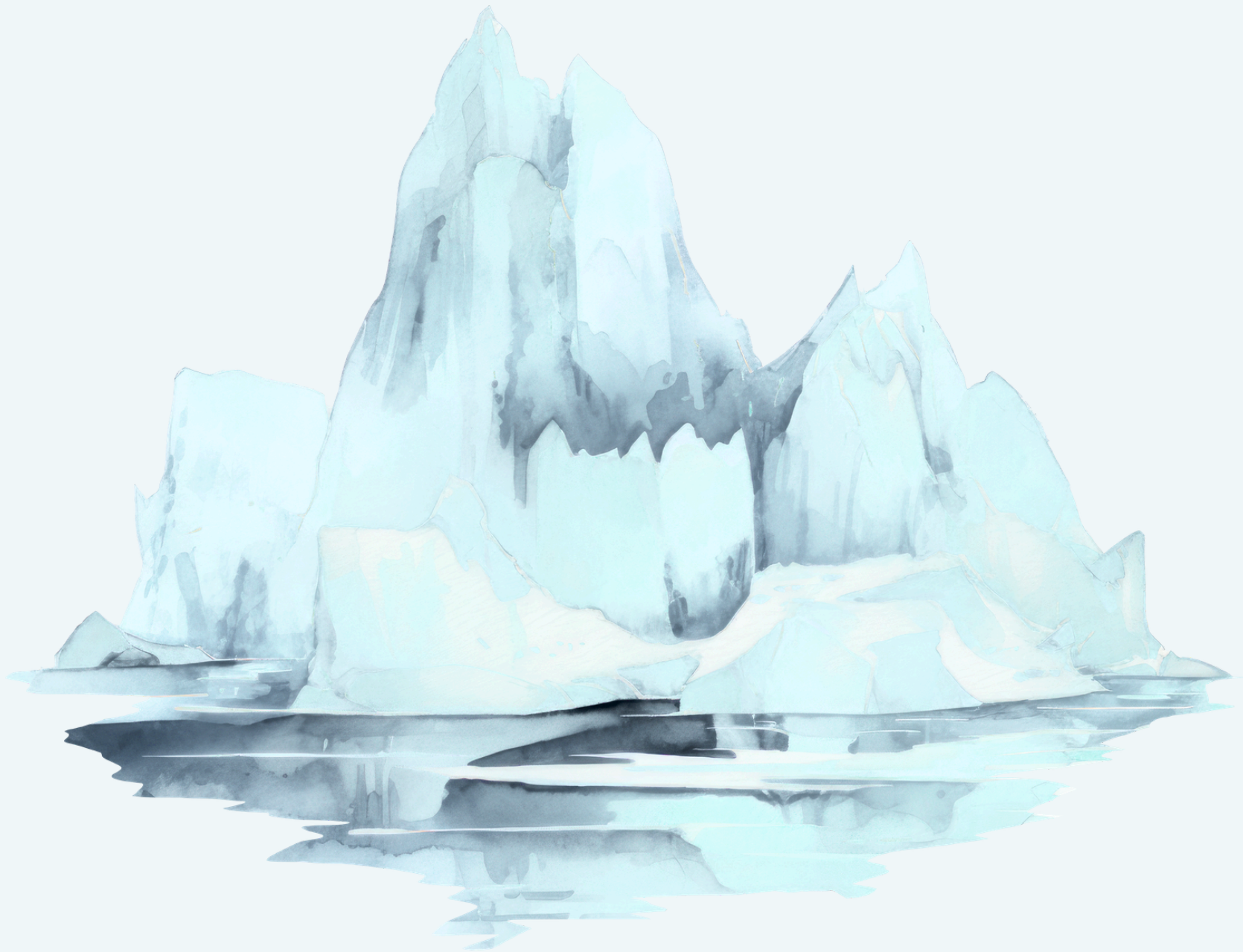
## 中深層





# Conservation

## 保護



The background features a stylized, low-poly illustration of ice formations in various shades of blue. On the right, a large, jagged ice formation with icicles hanging from its top edge dominates the scene. On the left, another ice formation is visible, also with icicles. In the lower right, there are smaller, more rounded ice shapes. The overall aesthetic is clean and modern, with a monochromatic blue color palette.

# Ice Glaciers

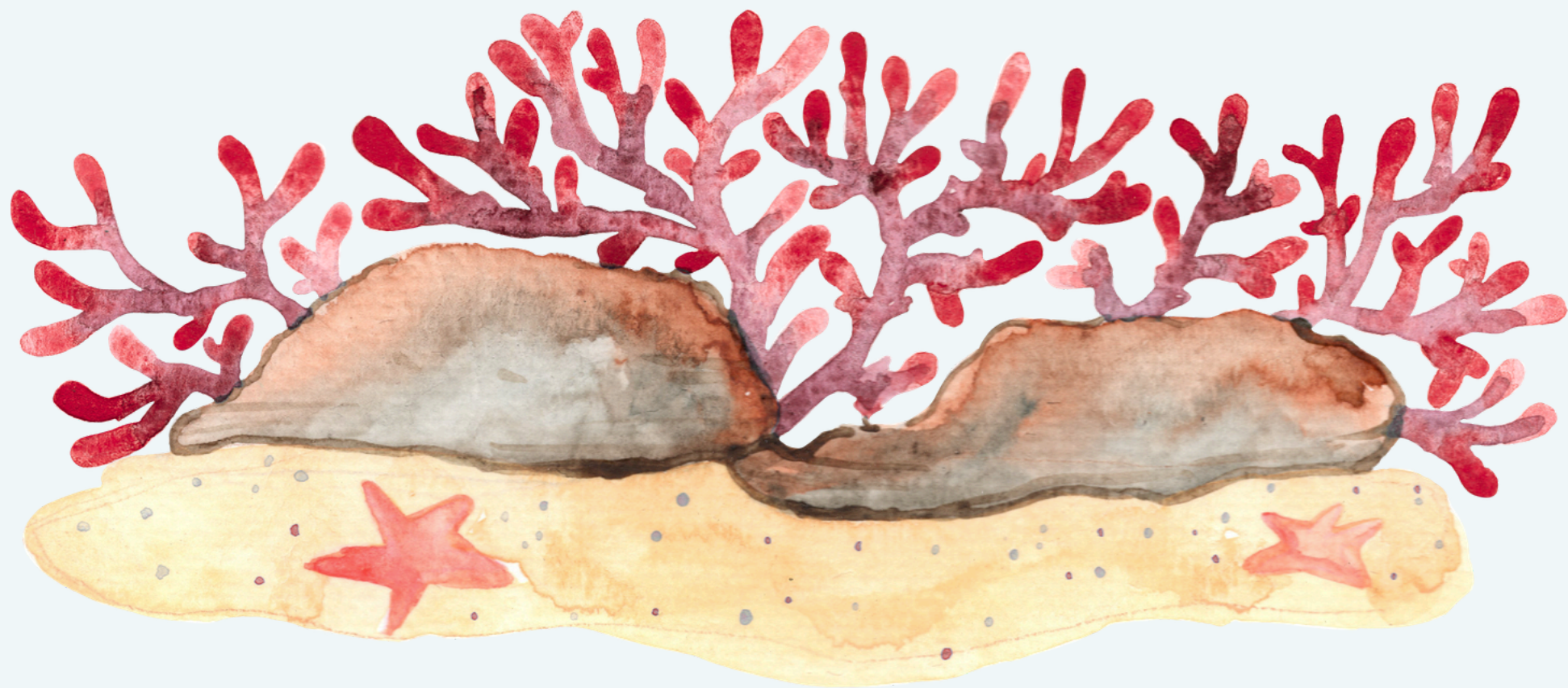
## 冰河





**Water Dam**

ダム





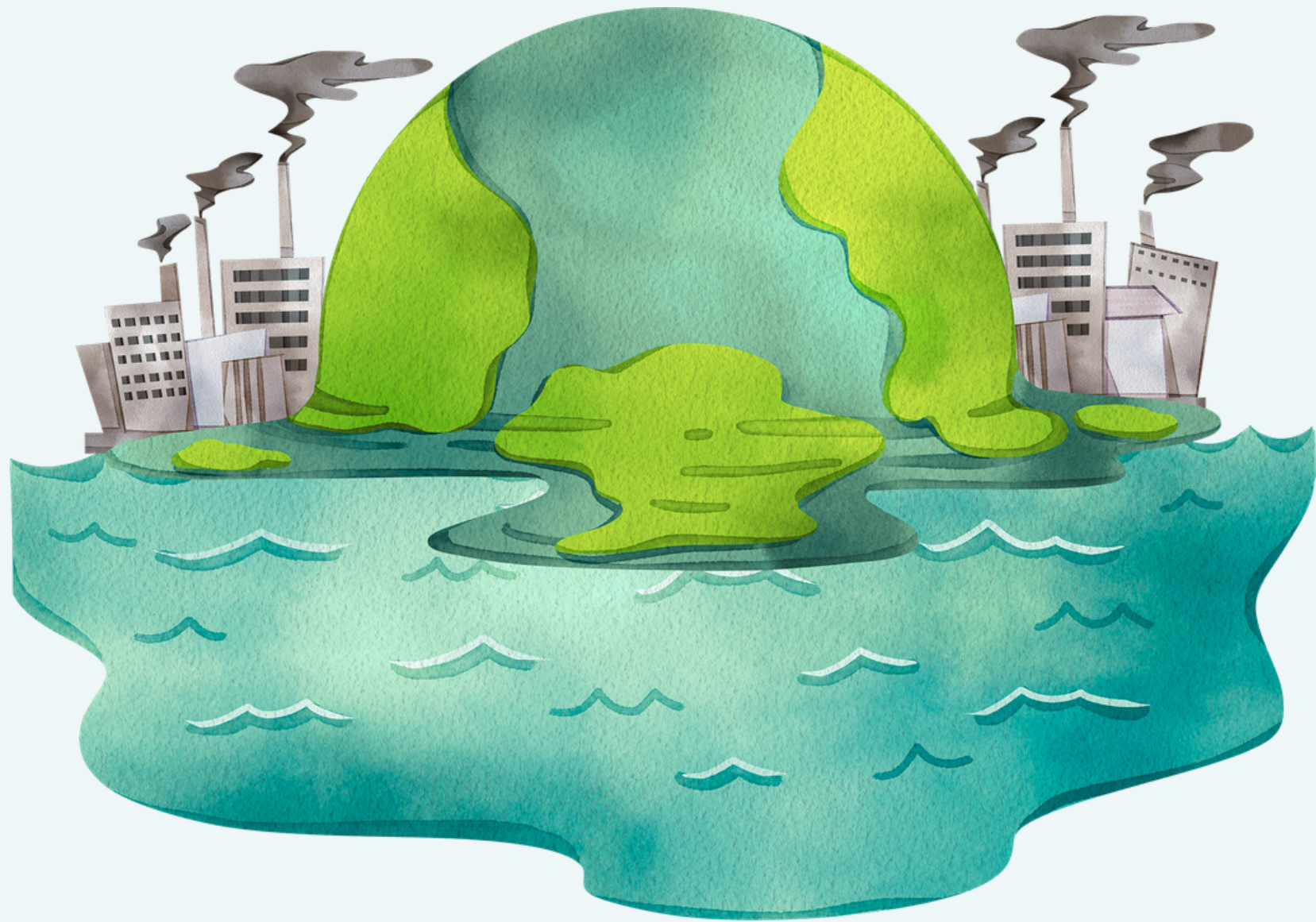
Habitat  
生息地



HELP!



Climate change  
環境變動





**Pollution**

公害

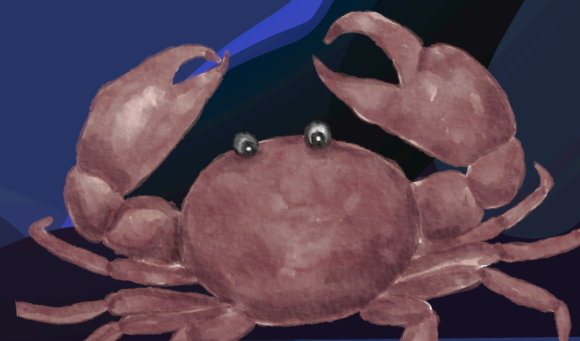
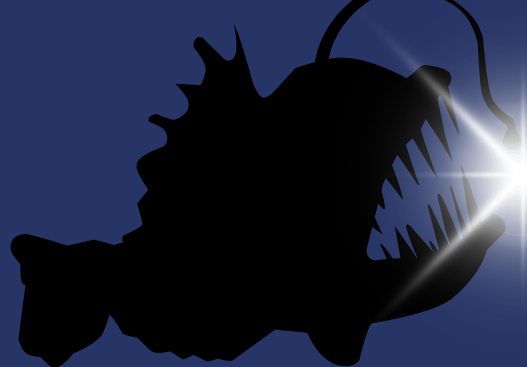


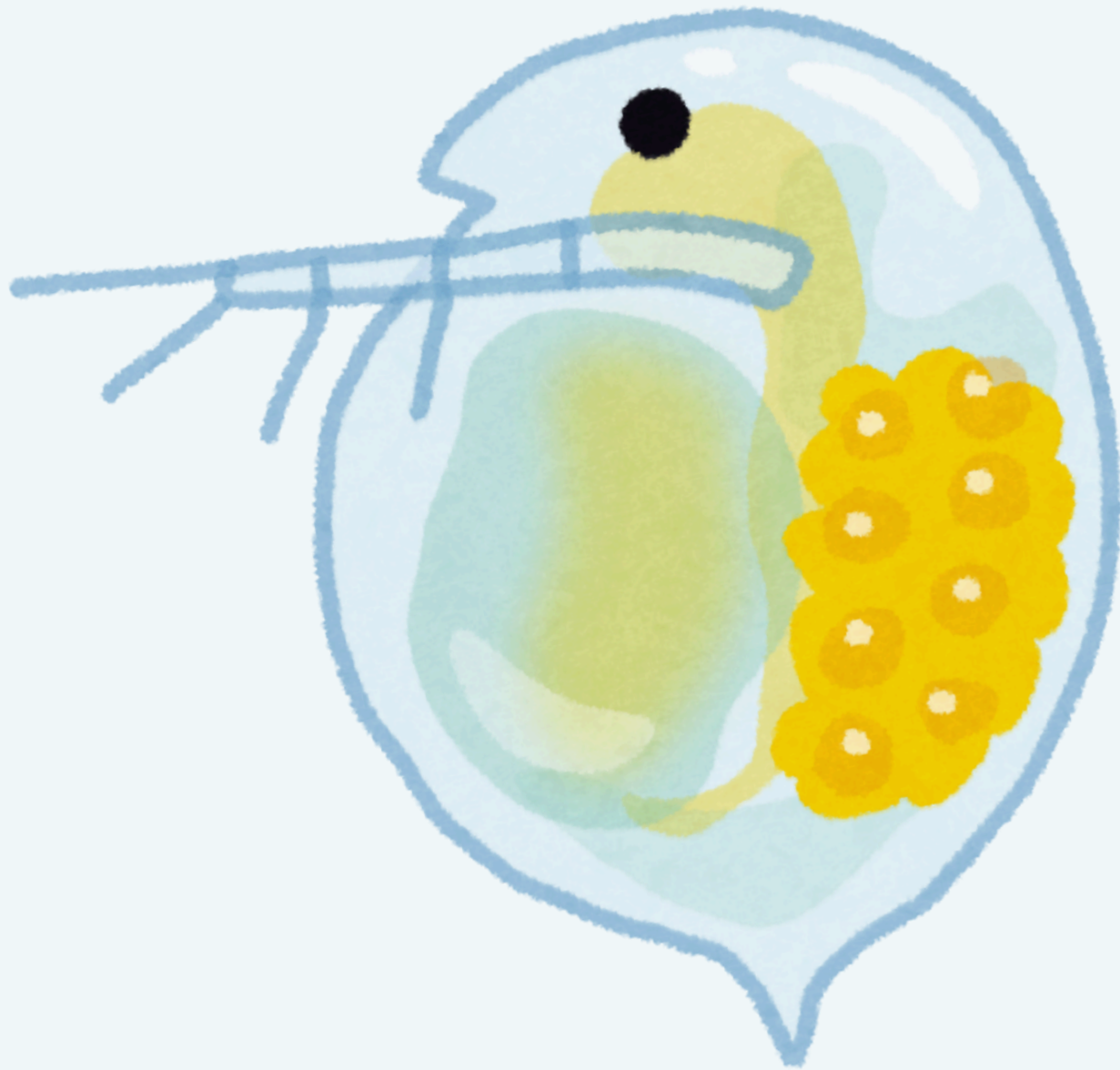


Algae  
藻

# Midnight Zone

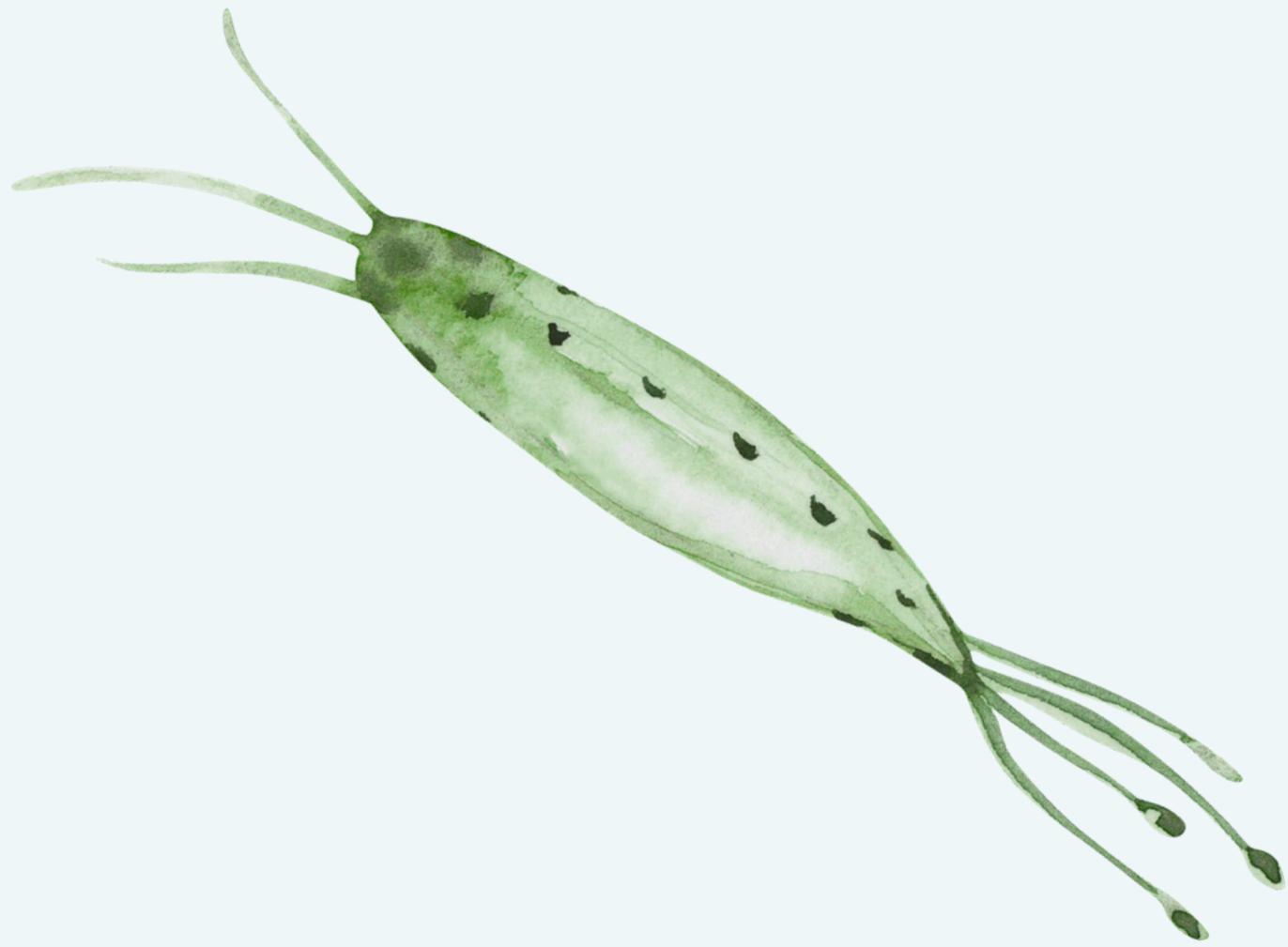
## 漸深層








Zooplankton  
動物プランクトン





Phytoplankton  
植物プランクトン

What **percentage** of  
Earth's **surface** is **ocean**?  
地球の何パーセントが海？



About 71%  
約71%

**Where is the deepest  
part of the ocean?**

**海が一番深い地点は？**



# The Mariana Trench

マリアナ海溝

What do we call when  
we catch **too** many fish?

魚を捕り過ぎることを何て言う？



**Overfishing**

乱獲



The background features a dark blue and black illustration of a cave interior. On the left, several stalactites hang from the ceiling. On the right, a cave entrance is visible, leading to a brighter area. The overall style is graphic and atmospheric.

# Carbon Footprint

## カーボンフットプリント

**What are the three R's  
of sustainability?**

**持続可能性の三つのRは？**



**Reduce, Reuse,  
Recycle**

抑制 (Reduce)、再利用  
(Reuse)、再生 (Recycle)

**Abyss Zone**

**深海帶**

**Otters and starfish  
are examples of ...**

**カワウソやヒトデは...**

**Keystone Species**

中樞種

# Bibliography

- Blueoceansociety.org. (2019). Creature Feature: Sea Stars – Blue Ocean Society for Marine Conservation. [online] Available at: <https://www.blueoceansociety.org/blog/creature-feature-sea-stars/> [Accessed 10 Apr. 2026].
- GWP Group. (2023). What are the 3Rs (for the environment)? Reduce, reuse, recycle. [online] Available at: <https://www.gwp.co.uk/guides/what-are-the-3rs/> [Accessed 10 Apr. 2026].
- Magazine, B.W. (2025). How deep is the deepest part of the ocean? [online] Discover Wildlife. Available at: <https://www.discoverwildlife.com/animal-facts/marine-animals/whats-the-deepest-part-of-the-ocean> [Accessed 10 Apr. 2026].
- Nps.gov. (2016). A Keystone Species, the Sea Otter, Colonizes Glacier Bay - Glacier Bay National Park & Preserve (U.S. National Park Service). [online] Available at: <https://www.nps.gov/glba/blogs/a-keystone-species-the-sea-otter-colonizes-glacier-bay.htm> [Accessed 10 Apr. 2026].
- USGS. (2018). How Much Water is There on Earth? [online] Available at: <https://www.usgs.gov/water-science-school/science/how-much-water-there-earth> [Accessed 10 Apr. 2026].
- World Wildlife Fund. (2026). Overfishing. [online] Available at: <https://www.worldwildlife.org/our-work/oceans/sustainable-seafood/wild-caught-seafood/overfishing/> [Accessed 10 Apr. 2026].

Made by:  
Praenuan Limvattanakul

Edited by:  
Romerawin Suntaranond  
Charisa Howe

Translated by:  
Takahiro Tanabe

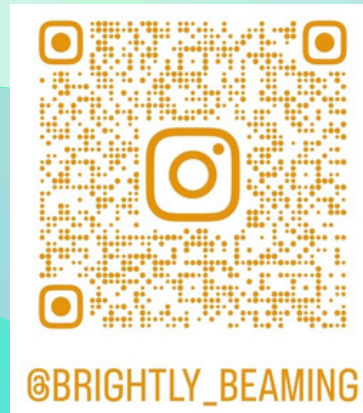


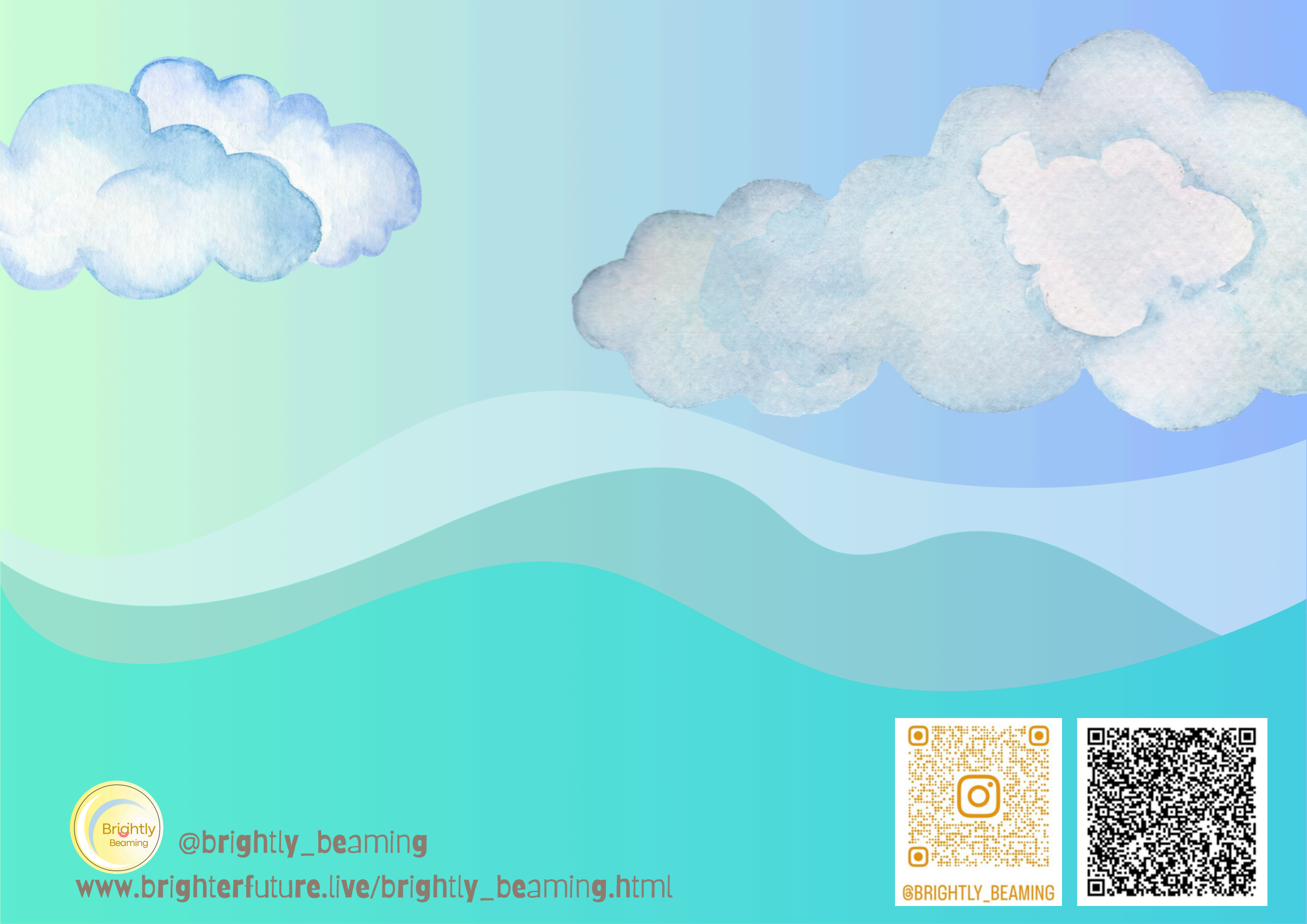




**@brightly\_beaming**

**[www.brighterfuture.live/brightly\\_beaming.html](http://www.brighterfuture.live/brightly_beaming.html)**





**@brightly\_beaming**

**[www.brighterfuture.live/brightly\\_beaming.html](http://www.brighterfuture.live/brightly_beaming.html)**

